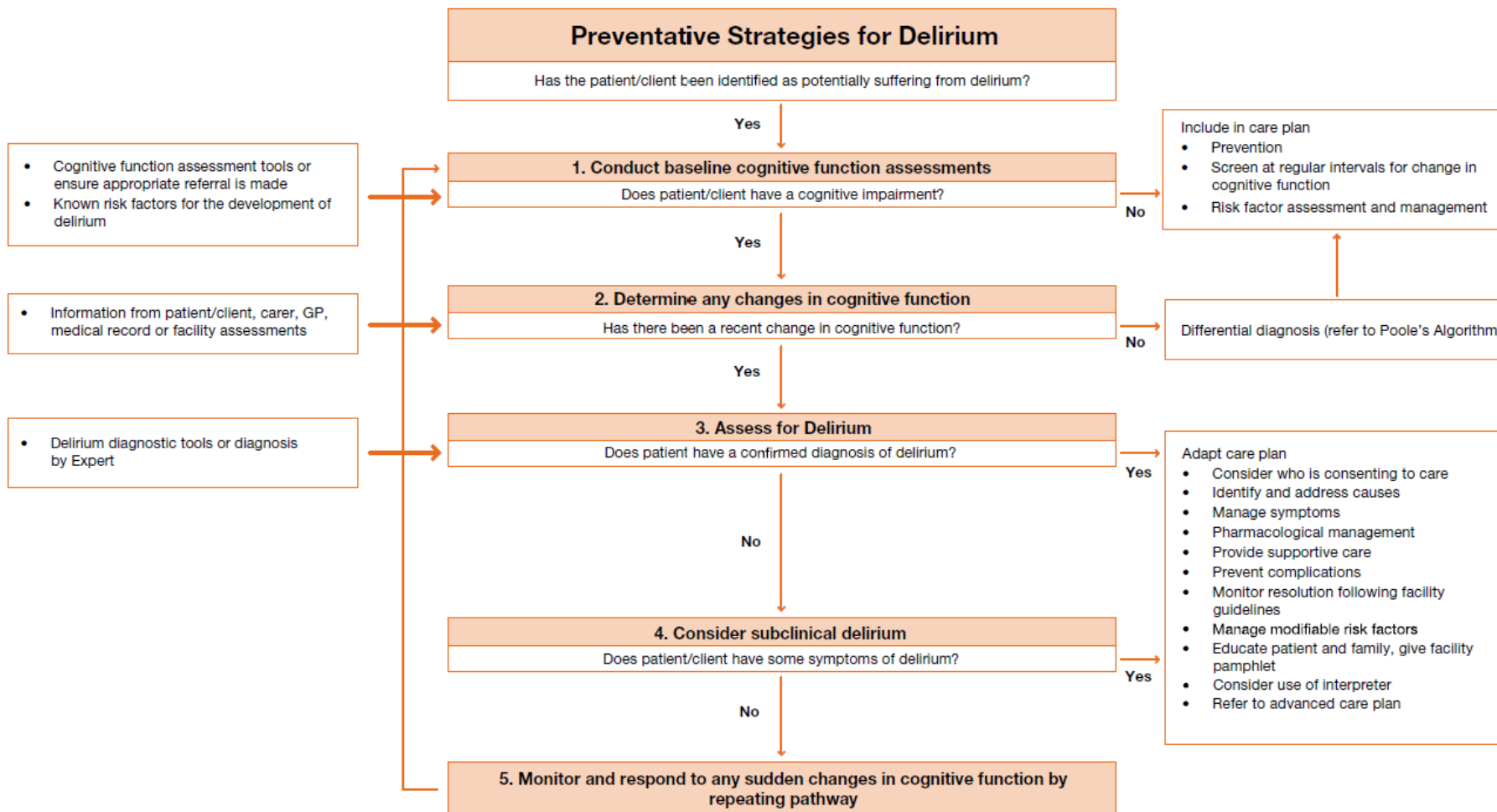




## DELIRIUM CARE PATHWAYS

Consider for use if aged over 65 years or 45 or older for Aboriginal and Torres Strait Islander Communities (ATSI)

Delirium may be a life threatening and potentially reversible condition



Adapted from: Clinical Epidemiology and Health Services Evaluation Unit 2006, *Clinical Practice Guidelines for the Management of Delirium in Older People*, Victorian Government Department of Human Services, Melbourne, Victoria.